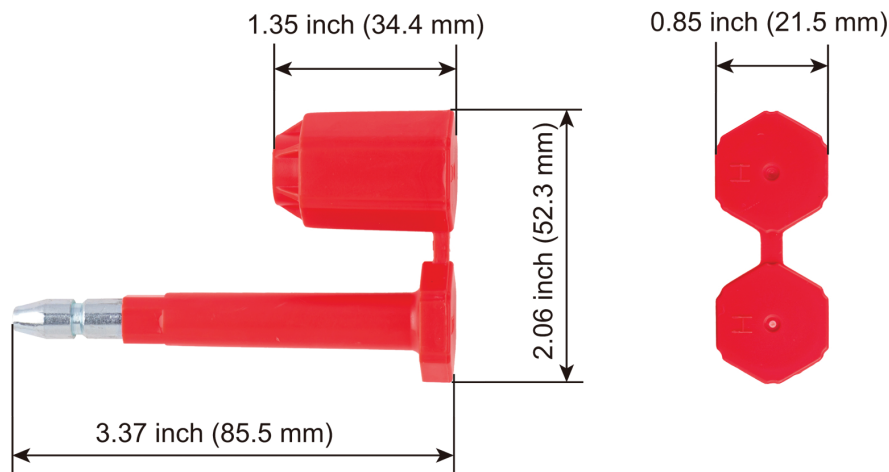


Bolt Seals

Application: Container Doors and Trailer Door Latches



- Barcoded High Security Seals.
- Classified by U.S. Customs as High Security.
- Conforms to C-TPAT and ISO 17712 (7/8" x 3 3/8")
- Used for trailer and container door latches.
- Available in Red, Blue, Green, Yellow, Orange or White.
- Seals can be laser printed with your name and any starting number.
- Stock seals are preprinted "ZIPTIE.COM" and numbered consecutively.



Material	Seal Body: Carbon Steel Coating: ABS
Certifications	High Security-ISO 17712 Certified and C-TPAT Compliant
Tensile Strength	3000-lb
Length	3.37 inches
Standard Colors	White, Orange, Yellow, Light Green, Light Blue, Red
Print Option	Laser Printing
Customization	Custom name, Logo printing, Variable numbering, and Standard barcode
Packaging	10 seals per tray, 200 per box
Box Dimensions	L17.3" x W11.8" x 5.2"
Box Weight	34-lbs



Standard Colors:

